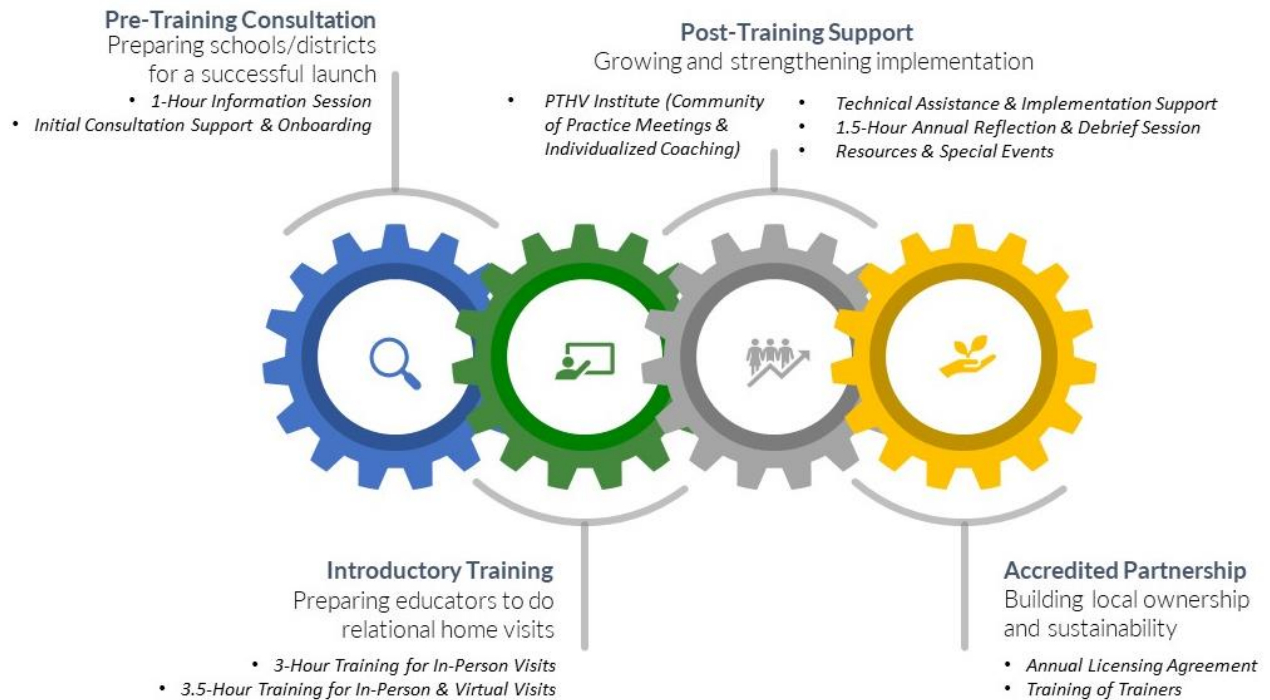


Parent Teacher Home Visits (PTHV) offers an evidence-based and replicable strategy built around a simple yet powerful premise: *When the most important people in a child's life – their families and their teachers – engage with one another as equally valued co-educators, children do better in school.*

Research examining implementation of PTHV, coupled with findings from a national landscape assessment, reveals the importance of effective support and monitoring of PTHV implementation to maximize the potential for sustainable growth and impact of the strategy. As such, we offer a simple yet coherent system of support that builds the capacity of educators and district leaders alike (outlined below).

PTHV System of Support



PTHV's system of support is designed to provide a seamless customer experience and ensure steady growth, locally and nationally. By curating content and services that are responsive to implementing partners' goals and needs, we aim to build trust at crucial moments and help shortcut the learning curve for PTHV implementation and management thereby enabling progression towards Accredited Partnership, which requires a minimum of two years of successful implementation and growth.

PTHV Service Offerings



Information Session. Laying the foundation for a strong launch, this optional session prepares district and school leaders as well as educators to make an informed decision about PTHV participation. Facilitators draw clear connections to how PTHV supports their district's priorities while participants have the opportunity to ask questions and reflect on how it may support their professional goals.



Initial Consultation Support. PTHV staff guide district leaders who are interested in launching a PTHV practice to consider the conditions and infrastructure needed to achieve strong implementation as indicated in the Dual Capacity-Building Framework and as informed by Implementation Science. This includes an exploration of local goals, assessment of training and implementation readiness, and practical resources to support planning efforts.



Introduction to Home Visits Training. This foundational session prepares educators to conduct in-person and virtual PTHV visits with fidelity. Educators are invited to examine their own assumptions, beliefs, and current family engagement practices, and are supported to adopt new mindsets that foster strong home-school partnerships. Practice and role play builds requisite home visiting skills while collaborative planning and reflection supports educators to consider how to link their home visit experiences to the classroom.



PTHV Institute (Community of Practice Meetings and Individualized Coaching). PTHV practitioners and leaders from across the country convene monthly as a Community of Practice (CoP) to collaboratively solve common problems of practice, share lessons learned, and co-create breakthrough practices that advance PTHV home visiting in their local communities and nationwide. The CoP includes access to a step-by-step curriculum that supports novice partnering districts in building a foundation for success as well as helping experienced partnering districts prepare for PTHV Accredited Partnership, a status that would allow them to conduct their own local PTHV trainings. Ongoing coaching for district staff teams augments the CoP. Sessions are differentiated to meet the individual needs and goals of each participating district and include the provision of supplemental PTHV tools/resources. Strategy development and strategic alignment, goal setting, analysis of systems conditions, planning, implementation, and continuous improvement are example Institute topics.



Reflection and Debrief Session. This mid- or end-of-year session extends PTHV's core practice of post-visit reflection by creating space for participants to engage in productive, transparent dialogue and collective sense-making. Topics include sharing lessons learned, best practices, and mindset shifts that result from home visits; deepening understanding of implicit biases surfaced from home visits and the effects of bias on students from historically marginalized communities; and planning and problem solving to apply experiences and lessons learned to classroom instruction.



Training-of-Trainers (TOT) Session. This session – part of PTHV's Accredited Partnership status – prepares a local training team consisting of educators, family members, and administrators to deliver PTHV's Introduction to Home Visits Session. Topics include a step-by-step review of PTHV's home visit model; reasoning behind each element of the Introduction to Home Visits session; personal story development; roles and expectations for trainers; and practice and role-playing. A home-grown training team allows school districts to conduct as many Introduction to Home Visits training sessions as they wish for each Accredited Partnership year, creates opportunities for family and teacher leadership development, and deepens local ownership of the PTHV practice.