

Demographics

[Filters](#) ▾ 
 Org\_Site: Compass Academy
HSA RSC
Organization: All ▾
Site: All ▾
School: All ▾
Grade: All ▾

Gender: All ▾
Age: All ▾
Primary Language: All ▾
Race and Ethnicity: All ▾
Homeroom: All ▾
Group: All ▾

Group2: All ▾
Reset to Default

[Definitions and Sample Items by HSA RSC Scale](#) | 
 [Navigating in Qualtrics Guide](#) | 
 [Data Dictionary \(Download\)](#) | 
 [Dashboard Feedback Survey](#)



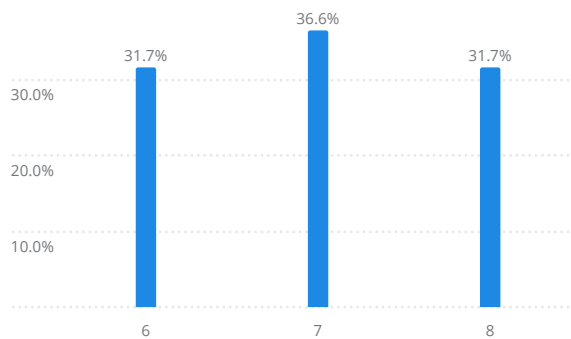
### Holistic Student Assessment Dashboard: Retrospective Self-Change

Completed Surveys  
**186**

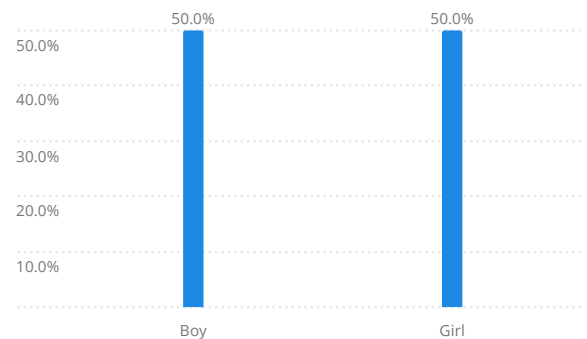
The **Holistic Student Assessment: Retrospective Self-Change (HSA-RSC)** measures change in youth social-emotional learning (SEL) (e.g., empathy, perseverance, critical thinking). The HSA-RSC asks young people to self-report on perceived change in social-emotional skills after reflecting on their experiences in a program or school at the conclusion of the program or school year. This page includes the demographic information provided in the youth roster (for primary language and race/ethnicity, we report what youth enter in the survey) for the Retrospective Self-Change.

You can use the filters at the top of this page to filter the data on this page. Filters apply to the specific dashboard page you're reviewing and need to be reapplied as you view different pages.

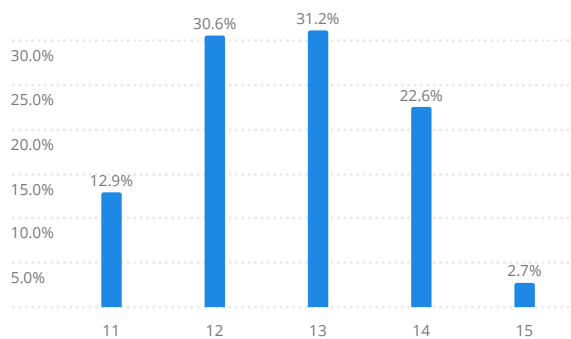
Grade 186 Responses



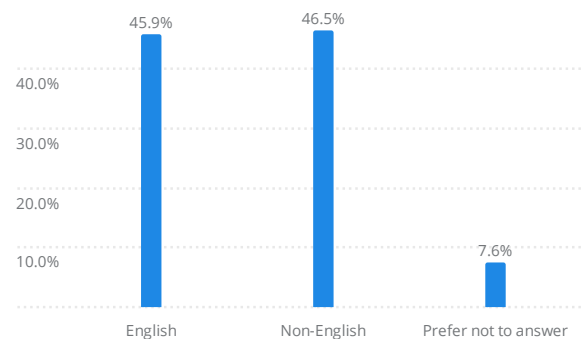
Gender 186 Responses



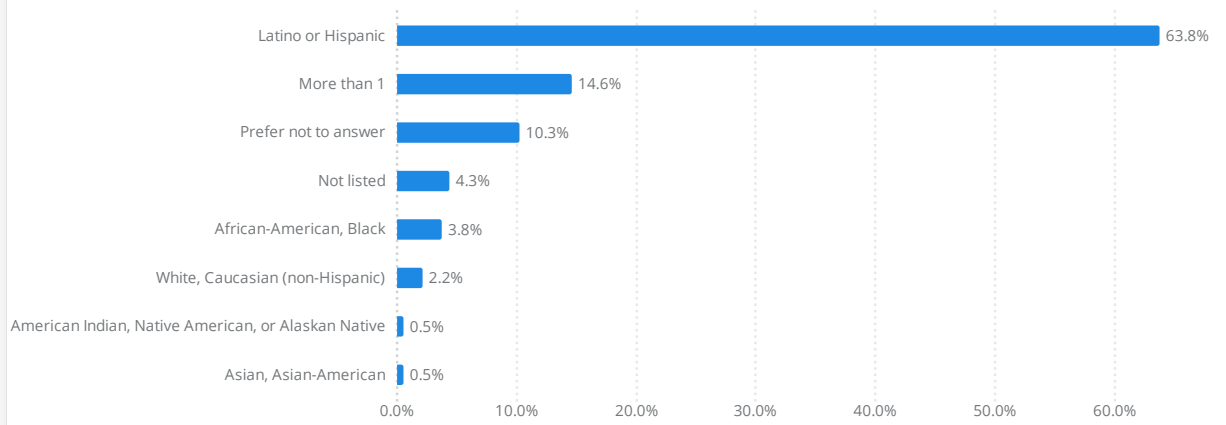
Age 186 Responses



Primary Language 185 Responses



Race & Ethnicity 185 Responses



Copyright 2021 - PEAR: Partnerships in Education and Resilience

For more information on using and attributing the data in this dashboard, please review [Guidelines for Citing and Distributing PEAR Data](#)

Percent Change

[Filters](#) | 
 [Org\\_Site: Compass Academy](#) | 
 [HSA RSC](#) | 
 Organization: All | 
 Site: All | 
 School: All | 
 Grade: All | 
 Gender: All | 
 Age: All | 
 Primary Language: All | 
 Race and Ethnicity: All | 
 Homeroom: All | 
 Group: All | 
 Group2: All | 
 [Reset to Default](#)

[Definitions and Sample Items by HSA RSC Scale](#) | 
 [Navigating in Qualtrics Guide](#) | 
 [Data Dictionary \(Download\)](#) | 
 [Dashboard Feedback Survey](#)



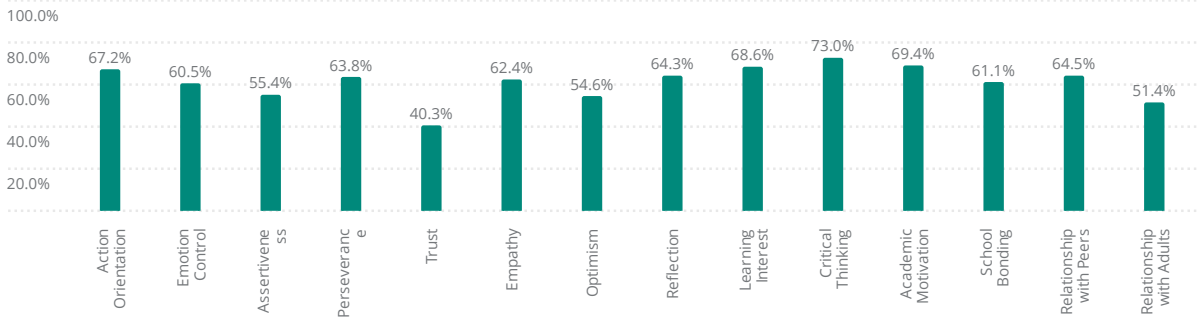
### Holistic Student Assessment Dashboard: Retrospective Self-Change

Completed Surveys  
**186**

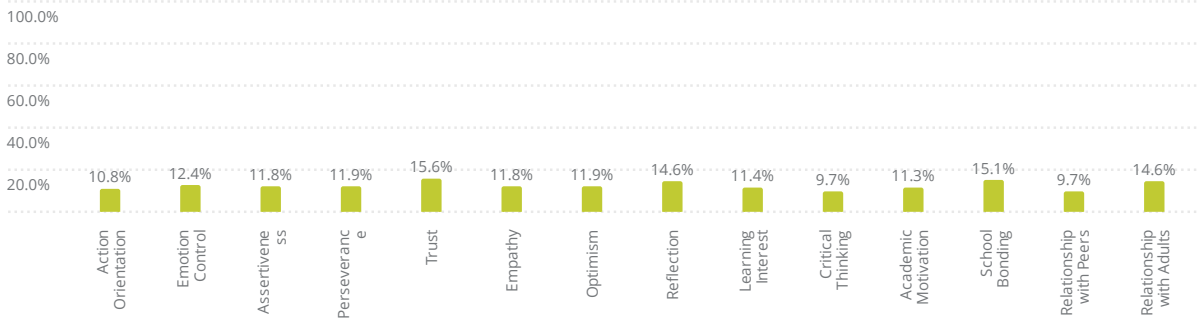
The **Percent Change** graphs below share the youth-reported percent change on the HSA's social-emotional learning (SEL) scales. Positive Change represents gains for a given SEL scale. Percent No Change represents youth who report they feel the same at the end of the year as they did at the beginning. Percent Negative Change represents youth-reported losses for a given HSA scale. The Positive Change, No Change, and Negative Change graphs complement each other. Within each scale, all youth either reported positive change (represented in the blue-green graph) or no change (represented in the yellow-green graph) or negative change (represented in the orange graph). The three graphs combined equal the total number of youth who responded.

You can use the filters at the top of this page to filter the data on this page. Filters apply to the specific dashboard page you're reviewing and need to be reapplied as you view different pages.

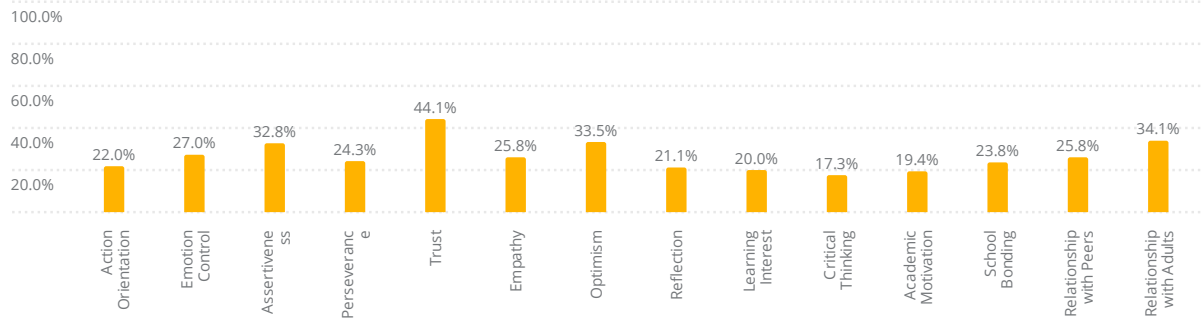
Percent Positive Change 186 Responses



Percent No Change 186 Responses



Percent Negative Change 186 Responses



Copyright 2021 - PEAR: Partnerships in Education and Resilience

For more information on using and attributing the data in this dashboard, please review [Guidelines for Citing and Distributing PEAR Data](#)

**Average Youth Response**

Filters | 
 Org\_Site: Compass Academy | 
 HSA RSC | 
 Organization: All | 
 Site: All | 
 School: All | 
 Grade: All | 
 Gender: All | 
 Age: All | 
 Primary Language: All | 
 Race and Ethnicity: All | 
 Homeroom: All | 
 Group: All | 
 Group2: All | 
 [Reset to Default](#)

[Definitions and Sample Items by HSA RSC Scale](#) | 
 [Navigating in Qualtrics Guide](#) | 
 [Data Dictionary \(Download\)](#) | 
 [Dashboard Feedback Survey](#)



**Holistic Student Assessment Dashboard:  
Retrospective Self-Change**

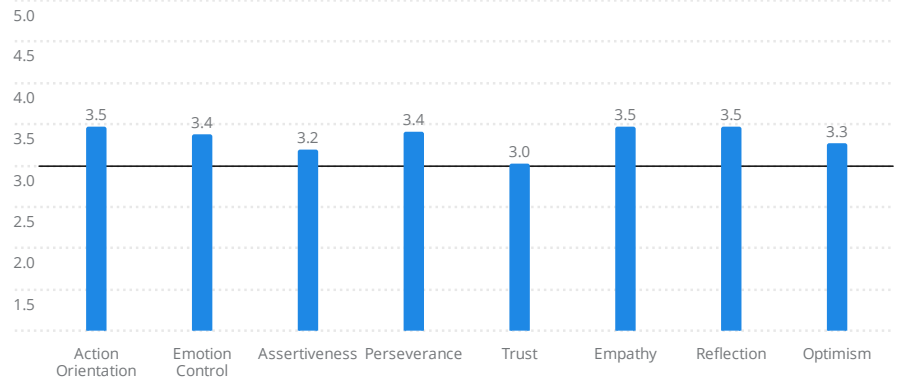
Completed Surveys  
**186**

The **Average Youth Response** graphs below share the youth-reported average change for HSA scales. The survey prompts youth to respond to each survey item on a 5-point scale (1 = *Much less now*, 2 = *A little less now*, 3 = *About the same*, 4 = *A little more now*, 5 = *Much more now*). This format allows the program or school to measure the extent to which the self-reported thoughts and feelings of individual youth and the group as a whole have changed since the beginning of the program or school year. For reference, we've included a line at the "About the Same" (3.0) response that indicates no change.

You can use the filters at the top of this page to filter the data on this page. Filters apply to the specific dashboard page you're reviewing and need to be reapplied as you view different pages.

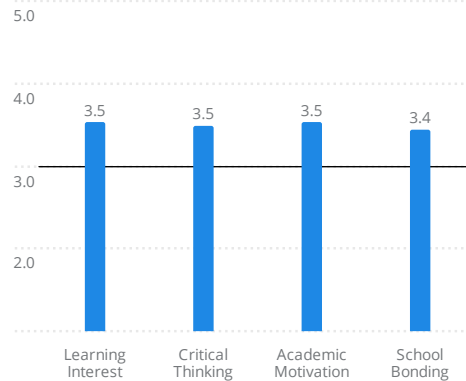
Much more now (5.0)  
A little more now (4.0)  
About the same (3.0)  
A little less now (2.0)  
Much less now (1.0)

**Resiliencies** 186 Responses



Much more now (5.0)  
A little more now (4.0)  
About the same (3.0)  
A little less now (2.0)  
Much less now (1.0)

**Learning & School Engagement** 186 Responses



**Relationships** 186 Responses

