



TUTORING POWERED BY READING PARTNERS

Reading Partners

The *Tutoring powered by Reading Partners* model helps students become proud, confident readers through personalized one-on-one tutoring sessions grounded in the science of reading.

Scan QR code with your phone's camera to access this content online.



OVERVIEW

Reading Partners works with communities, schools, and volunteers to provide high-dosage, one-on-one literacy tutoring for students. Fueled by the belief that reading is a civil right, the *Tutoring powered by Reading Partners* model provides an easy-to-use, evidence-based, and customizable curriculum, as well as extensive training, for community volunteers to deliver tutoring to students reading approximately 0.5 to 2.5 years below grade level. Reading Partners helps partner organizations, such as schools, after-school programs, community centers, and other youth-serving organizations, build a community-centered literacy ecosystem.

Reading Partners' curriculum consists of over 150 lessons aligned to the science of reading. During tutoring sessions, students choose a book to have read aloud to them, as well as learn and practice foundational literacy skills (e.g., decoding, fluency, alphabet), phonics and word analysis, and higher-level comprehension skills.

Since 1999, Reading Partners has been directly implementing its model in 12 metro areas across the United States. To help more students develop their reading skills, Reading Partners has expanded its programming to provide nationwide literacy tutoring via its online platform. During the 2022–2023 school year, 7,400 community tutors delivered literacy tutoring to over 6,000 students, and 82% of all Reading Partners students finished the year meeting or exceeding their primary end-of-year literacy growth goals. ► [Reading Partners Program](#) ► [Tutoring powered by Reading Partners Overview](#)



What Makes This Model Innovative?



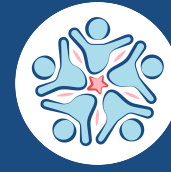
Customization

The one-on-one *Tutoring powered by Reading Partners* model affords each student the opportunity to begin lessons at their own starting place and advance at their own pace.



Rigorous Learning

The curriculum is aligned to standards, as well as best practices in reading instruction, to promote mastery through alignment with classroom expectations.



Affirmation of Self & Others

Books include representative and diverse characters and themes so all students can see themselves reflected in the books they read while also learning about others and the world around them.

DESIGN

Goals

Reading Partners helps children become lifelong readers by empowering communities to provide individualized instruction with measurable results.

Mastery of Foundational Reading Skills

Reading Partner's evidence-based, individualized instruction helps students build their foundational reading skills using its structured literacy curriculum.

Empowering Lifelong Readers

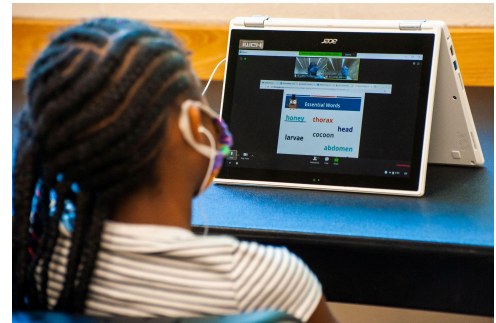
By providing evidence-based, individualized instruction to focus on the individual needs of each student, Reading Partners helps students become strong, confident readers with a passion for learning.

Experience

The *Tutoring powered by Reading Partners* model focuses on supporting K-4 students who are several months to two and a half years behind grade level in reading. Community volunteers help provide individualized literacy instruction to help students master the reading fundamentals they need to reach grade level. These literacy tutoring sessions can take place during school, after school, or outside of school at local community centers.

Reading Partners works with schools and community organizations to co-develop literacy goals that are right for their individual context, such as increasing their literacy scores or narrowing literacy learning gaps. After students have reached their goals, they graduate from the tutoring program.

Students enrolled in the programming receive 90 minutes of one-on-one literacy tutoring per week broken into two 45-minute sessions or three 30-minute sessions. Where possible, students meet with the same tutor each session to build a trusting, warm relationship. Tutoring sessions follow the same flow every time: tutor read aloud, direct instruction, and practice and application of skills.



Tutor Read Aloud

Each tutoring session begins with a tutor read aloud for approximately 5–10 minutes. Because books are an opportunity to open eyes to unknown worlds and invite readers to join characters and authors in the stories, students can choose any book they'd like from Reading Partners' intentionally curated diverse library. After reading the book aloud, the tutor asks questions, and discusses the book's content and vocabulary with the student. This activity models fluency, builds on reading comprehension skills, and provides an opportunity for tutors to learn more about each student's individual interests. Additionally, by demonstrating that books can be about any topic of interest, this read aloud helps children develop a love of reading.



Direct Instruction

The tutor introduces a new standards-aligned skill or concept at the student's identified reading level and helps them complete a variety of literacy tasks. Using structured literacy lesson plans with explicit instructional language, each skill is introduced through direct instruction. The tutor scaffolds the lesson to help the student acquire the skill before providing an opportunity to independently apply the skill in connected text.

For example, a tutor may introduce the *sh* sound to an emerging reader by showing the letters, pointing under the letters, and introducing a word that contains the letter sound, such as *shark*. Students and tutors see the same screen, though the tutor version includes explicit instructional language for the skill (blue text) and directions for the tutor (black text).



Students are assessed at enrollment and placed at an appropriate starting lesson in the curriculum sequence specific to their literacy needs, where they practice key reading skills and develop their vocabularies.

- Emerging Readers (Kindergarten reading level) learn about letters, sounds in spoken language, and how print works.
- Beginning Readers (1st grade reading level) learn phonics, sight words, and early comprehension skills, as well as ongoing fluency practice.
- Advancing Readers (2nd–4th grade reading levels) build complex comprehension skills, fluency, vocabulary, and contextualize what they have just read in meaningful ways.

The amount of time spent in direct instruction is dependent upon each student. Some students acquire the new skill almost immediately so they move into the practice and application of the skill; other students may spend the remainder of the session in this lesson portion. If a student does not finish a lesson in a single session, they pick up where they left off in the following session.



Practice & Application of Skills

After students learn their skill(s) for the day, they practice and apply it(them) alongside their tutor using the platform’s dynamic whiteboard features. During this time, tutoring session activities might include:

- Explicit phonological and phonemic awareness instruction with games to reinforce skills (e.g., rhyming bingo)
- Explicit phonics instruction with games for practice to reinforce skills (e.g., long vowel word sort)
- Explicit sight word practice with games for practice to reinforce skills (e.g., sight word tic tac toe)
- Explicit reading comprehension skills taught and practiced in isolation and grade level texts
- Student read aloud with text aligned with literacy skill for the day



A screenshot of a 'Sight Words Tic Tac Toe' game board. The board is a 3x3 grid. The top row contains the words 'I', 'come', and 'we'. The middle row contains 'this', 'said', and 'see'. The bottom row contains 'my', 'here', and 'no'. The word 'I' is circled in orange. The word 'we' has a red 'X' over it. The word 'said' has a red 'X' over it. The word 'my' has a red 'X' over it. The words 'this', 'see', 'here', and 'no' are not marked. In the top left corner of the board is a cartoon owl icon. In the bottom right corner is the 'READING PARTNERS' logo.

Sight Words Tic Tac Toe		
I	come	we
this	said	see
my	here	no

Supporting Structures

The *Tutoring powered by Reading Partners* model can be implemented by any school or youth-focused organization ready to help children develop reading skills, but it requires shifts in curriculum, adult roles, and partnerships. [📖 Tutoring powered by Reading Partners Overview Implementations Considerations](#)

Schools implementing the model leverage Reading Partners' comprehensive suite of curriculum and resources.

Tutors leverage Reading Partners' easy-to-use, structured curriculum to help students gain the skills needed to be independent and successful readers. The curriculum consists of over 150 scripted lessons and is aligned to the science of reading, Common Core State Standards, other state standards, and best practices in reading instruction to promote student mastery.



CURRICULUM, INSTRUCTION, & ASSESSMENT

The Reading Partners library of books is intentionally curated for students to connect with characters who look like them and who share experiences with them and to learn about others and better understand experiences beyond their own. Reading Partners' guiding principles support a selection of inclusive books. [📖 Curriculum Book Selection Criteria](#)

Using either the school's existing literacy assessment tools or Reading Partners' proprietary assessments, Reading Partners assesses student reading skills three times during the year and formally surveys teachers twice yearly to track each student's progress and ensure high-quality programming. This process establishes benchmark reading levels at the time of enrollment, modifies instructional reading plans throughout the year, and reports gains at the end of the school year.

Schools must identify and recruit literacy tutors, often community volunteers.



ADULT ROLES, HIRING, & LEARNING

In the *Tutoring powered by Reading Partners* model, partners are responsible for the recruitment and training of tutors. Reading Partners trains staff to deliver the two hours of training that tutors will need to effectively support students. Schools maintain access to these training materials to allow for sustainable and ongoing onboarding.

Reading Partners believes that anyone above the age of 14, regardless of skill level, can be a high-quality literacy tutor. Tutors are often community volunteers and can include parents, high school or college students, as well as school support staff. Support in the recruitment process is available, if desired.

Beyond the tutors, schools need to identify at least one staff member to:

- Oversee tutoring implementation, including supporting students and tutors throughout the sessions
- Onboard, coach, and background check new tutors
- Manage student data and oversee progress toward goals
- Communicate with families
- Liaise with Reading Partners

Schools must allocate time for students to participate in literacy tutoring sessions.



SCHEDULE & USE OF TIME

For students to maximize their opportunities using the *Tutoring powered by Reading Partners* program and curriculum, regularly scheduled tutoring is best. For many schools, this is a total of 90 minutes of tutoring per child per week. Schools have the flexibility to choose tutoring session length (e.g., three weekly 30-minute sessions or two weekly 45-minute sessions), and can choose when tutoring takes place (e.g., before, during, or after school). While tutoring can take place at any time, Reading Partners recommends that it occur during the school day intervention blocks or in structured after-school programming blocks.

Schools recruit and train volunteers from the community to serve as Reading Partners tutors.



FAMILY & COMMUNITY PARTNERSHIPS

The *Tutoring powered by Reading Partners* model hinges upon the successful recruitment of volunteers, which often include family members, retired or future teachers, work-study program participants, college and high school students, and other community members.

For non-school organizations, Reading Partners works in partnership with out-of-school-time programs and community centers to provide the literacy resources and services that advance student learning.

Tutoring sessions must occur in a quiet space where students can focus.



SPACE & FACILITIES

While there are no physical space requirements for literacy tutoring sessions, partners should ensure that tutoring can occur in an environment conducive to focus and learning. For example, tutoring can occur in a separate room without noise or distractions or in the back of a classroom with headphones.

Schools must provide laptops and headphones for tutoring sessions on the Reading Partners Connects online platform.



TECHNOLOGY & INFRASTRUCTURE

Tutors use the Reading Partners Connects platform to access lesson plans, student profiles, video conferencing tools, and a library of decodable texts.

► [Reading Partners Connects Platform Overview](#)

While tutoring can occur either virtually or in person, students need access to a laptop, as well as headphones with a microphone. This allows students to access the tutoring platform and curriculum online and to communicate with their tutor. For in-person sessions, tutors and students both still use the online curriculum, though headphones may not be necessary.



BUDGET & OPERATIONS

Access to the *Tutoring powered by Reading Partners* model has an ongoing cost for organizations.

Reading Partners charges \$300 per student per year. This includes access to Reading Partners' comprehensive curriculum, assessment tools and support, access to its digital platform, and ongoing training and development for tutors. Discounts are available for programs serving more than 250 students.

IMPLEMENTATION

Supports Offered

[Reading Partners](#) offers the following supports to help you implement its approach.

Tutoring powered by Reading Partners

Cost Associated



The *Tutoring powered by Reading Partners* model provides partners with engaging, high-quality education materials and extensive training to implement effective literacy tutoring with students. Partners receive access to a full suite of resources including:

- Curriculum materials
- Training for staff
- Access to the Reading Partners Connects online tutoring system
- Consistent individualized coaching
- Optional student assessments for progress tracking

[Get in Touch](#)

Family Engagement powered by Reading Partners

Cost Associated



Family Engagement powered by Reading Partners provides partners with a suite of family literacy resources and a training series on how to implement these resources. [Family Engagement powered by Reading Partners](#) This may be in addition to *Tutoring powered by Reading Partners*, or independent of other *Reading Partners* programming. Family Literacy Resources include:

- Family Literacy Workshops with topics such as Cultivating a Reading Environment, Developing a Love for Books, and Developing Word Consciousness
- Family Literacy Packets, available in both English and Spanish, with instructions for several literacy activities and a suggested eight-week schedule for families to practice together
- One-page Literacy Tip Handouts with topics such as creating an at-home library and questions to ask while reading with children

[Express Interest](#)

COVER to COVER

Cost Associated



COVER to COVER is a book series grounded in both the science of reading and Reading Partners' curricula. The stories include representative characters and themes so all students can see themselves reflected in the books they read while also having the opportunity to learn about the world around them through other people's backgrounds, cultures, and life experiences. COVER to COVER books are currently available in e-book format only, though the goal is to make hard copy books available in the near future.

[Get in Touch](#)

Co-design Consultation and Partnership

Cost Associated



Reading Partners can work with schools and other interested organizations to design a customized program that meets the partner's literacy needs and goals. Examples of these partnerships include:

- Ordering books and family engagement resources without any literacy tutoring
- Daily tutoring sessions (rather than 90 minutes/week)

[Get in Touch](#)

Reach

During the 2022–2023 school year...

169,604

Tutoring
Sessions

6,878

Students

91%

Students of
Color

7,405

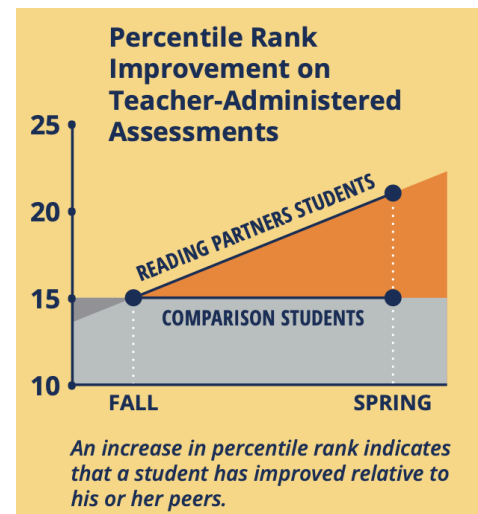
Community
Tutors

Impact

Reading Partners has worked with several evaluation organizations to help them better understand the results of its structured literacy tutoring programs, which include both direct model implementation and *Tutoring powered by Reading Partners*.

The Reading Partners tutoring programs promote literacy skill gains among elementary-aged students. [Reading Partners Evidence Base](#)

- In a randomized controlled trial from 2011 to 2015, Reading Partners demonstrated a positive and statistically significant impact on student reading comprehension, fluency, and sight-word reading. [MDRC Impact Study](#)
- A separate quasi-experimental study found that Reading Partners' students had statistically significantly higher spring assessment scores than comparison students. [APA Consulting Impact Study](#)



The Reading Partners model also encourages the social-emotional development of students.

In a small scale study, 83% of students improved their social-emotional learning skills by the end of the school year. [Child Trends Student Social Emotional Learning Outcomes](#)

- Students demonstrated statistically significant improvements in reading engagement, social competence, persistence, and self-control during the program.
- Positive and warm student–tutor relationships were favorably associated with students' growth in school engagement and persistence.

Schools and communities report positive outcomes in their partnerships with Reading Partners.

Among 2022–2023 end-of-year survey respondents:

- 93% of principals report improved school-wide progress.
- 100% of teachers report Reading Partners is valuable to their school.
- 85% of volunteers are satisfied with their volunteer experiences.

Contact

Jennifer Joyce

Vice President of National Programs

jennifer.joyce@readingpartners.org

RESOURCES



[Reading Partners Program](#)
An overview of the Reading Partners literacy tutoring

Literacy Tutoring Powered by Reading Partners



Partner with us

Reading Partners has over 20 years of experience supporting students through robust, proven one-on-one literacy tutoring, working in partnership with schools, communities, and families. Students enrolled in Reading Partners make impressive gains, and we know there are many more students who could benefit from our proven model. Together with our partners, we will expand access to literacy support among student populations across the nation.

How it works: The *powered by Reading Partners* model provides our partners with engaging, high-quality educational materials and extensive training to implement effective literacy tutoring with students.

[Tutoring powered by Reading Partners Overview](#)
A one-page overview of Tutoring powered by Reading Partners

[Tutoring powered by Reading Partners Overview Implementations Considerations](#)
A list of implication for schools to consider as they explore a partnership with Reading Partners

Students and Families

Strong programming begins with strong relationships with students and a consistent schedule for tutoring. As you begin to consider Reading Partners for your students, consider how often students attend your program, the consistency of participation, parent communication, and where your direct access is coming from (directly at school, through another student partner, directly via families/caregivers). What communication structures do you have in place or plan to put in place to communicate with their schools and caregivers?

For students to maximize their opportunities using Reading Partners' program and curriculum, regularly scheduled tutoring is best. Consider what your expected participation is for students (regular participation, drop-in, sign-up and commit for a period of time). We've found that the more session times there are available, the easier it is to enroll students and enlist the support of volunteers. We also recognize that time constraints are a reality in many ways (after-school hours, other enrichment programs, or school schedules) and so recommend that your tutoring schedule is clearly defined as you begin to plan for implementing the Reading Partners curriculum. How do you see tutoring powered by Reading Partners fitting into your program's schedule and/or routines?

Reading Partners Book Selection

Guiding principles for selecting books for inclusion to the curriculum

Research in the Science of Reading shows that learning to read is not natural and is an ongoing process. This ongoing process is more difficult when students feel discouraged by or uninterested in the books they read. Reading Partners is committed to ensuring students have books that celebrate their identities, enforce their learning opportunities, and inspire them as readers.

Dr. Sims Bishop, a leader in multicultural representation in children's literature, was the first to introduce the idea of mirrors, windows, and sliding doors, which Reading Partners adopts in our book selection process. Books are an opportunity for students to see themselves positively reflected when reading (the mirrors). Inclusion and representation are important; our book lists are curated so that the multitude of young readers with identities known or unknown, visible or invisible, can find themselves and see that reading is meant for them. We firmly believe that books have the opportunity to open eyes to unknown worlds (the windows) and invite readers to join characters and the authors in the stories (the sliding doors).



[Reading Partners Website](#)
The Reading Partners website

[Curriculum Book Selection Criteria](#)

Guiding principles for curriculum book selection

[Reading Partners Connects Platform Overview](#)

An overview of the Reading Partners Connects virtual platform




Family Engagement Powered by Reading Partners

Overview
By partnering together through Family Engagement Powered by Reading Partners, your organization will receive a suite of family literacy resources (outlined below) and a training series on how best to implement these resources. This may be in addition to Tutoring Powered by Reading Partners, or independent of other Reading Partners programming.

Family Literacy Resources
Family Literacy Workshop Series
Reading Partners has developed a six-part workshop series that instruct parents and caregivers on how to build literacy skills with their children and give families the opportunity to prepare for and practice these skill-building activities together with their children. Each workshop includes a trainer guide, a slide presentation, links to and supplemental handouts, all in English and Spanish.



[Family Engagement powered by Reading Partners](#)

An overview of Family Engagement powered by Reading Partners



Evidence Base

MULTI-YEAR EXTERNAL EVALUATION PROJECTS CONDUCTED (Since 2011)

	Gold-standard research found Reading Partners' program had a positive and statistically significant impact on second- through fifth-grade student reading proficiency, leading to acceptance into the Institute of Education Sciences What Works Clearinghouse. <i>Design: Randomized control trial</i>	2011-2015 1,166 students GRADES 2-5
	A respected national education research firm found that first- through third grade students served by Reading Partners (and particularly English language learners) showed significantly greater improvement in their literacy skills than comparison students not served by the program. <i>Design: Quasi-experimental with comparison group</i>	2012-2018 1,551 students GRADES 1-3


[Reading Partners Evidence Base](#)

A summary of the evidence base in support of Reading Partners' effectiveness

Executive Summary

MOBILIZING VOLUNTEER TUTORS TO IMPROVE STUDENT LITERACY

Implementation, Impacts, and Costs of the Reading Partners Program

 **mdrc**
BUILDING KNOWLEDGE TO IMPROVE SOCIAL POLICY

Robin Tepper Jacob
Catherine Armstrong
Jacklyn Atlanta Willard

March 2015

[MDRC Impact Study](#)

A 2011–2015 study conducted by MDRC evaluating Reading Partners' effectiveness at improving student literacy




Expanding Opportunities to Successfully Support Early Readers: A Five-Year Study of Reading Partners Colorado
May 2017

Mile High United Way Social Innovation Fund Grant
Sponsor: Reading Partners

[APA Consulting Impact Study](#)

A 2012–2018 study conducted by APA Consulting evaluating Reading Partners' effectiveness at improving student literacy

Student Social Emotional Learning (SEL) Outcomes
Evaluation conducted by Child Trends



Social-Emotional Learning Helps Children:

- Acquire and effectively apply the skills necessary to understand and manage emotions
- Set and achieve positive goals
- Feel and show empathy for others
- Establish and maintain positive relationships

Students' SEL skills were assessed through surveys of their classroom teachers completed when students enrolled in Reading Partners' program (pre-test) and again at the end of the school year (post-test). In each of these surveys, teachers reported on five key SEL skills:

Social Competence A student's ability to understand and take peers' perspectives, work well with peers, positively resolve problems, and behave appropriately according to social norms.	Persistence A student's ability to continue working toward a goal in spite of obstacles, discouragement, or difficulties.	Self-Control A student's ability to control emotions and behaviors, control attention or focus on a given task, and wait his or her turn or for his/her turn.	Reading Engagement A student's level of participation, interest, curiosity, and motivation specifically in reading activities.	School Engagement A student's level of participation, attention, interest, curiosity, and motivation in school activities broadly.
--	---	---	--	--

[Child Trends Student Social Emotional Learning Outcomes](#)

A 2016–2018 study evaluating the Reading Partners' programming impacts on students' SEL outcomes