

Crafting a Successful



Mentoring Framework

THE GENTLEMEN'S
LEAGUE

EDUCATE ◦ ENRICH ◦ EMPOWER

The Gentlemen's League

The Gentlemen's League is an all-male, school-based mentorship program that serves Boys of Color in grades 3-12, through whole-child targeted supports, incentive programs, service learning, social-emotional development, and intentional mentoring that creates opportunities for children to experience joy and success.

The "Crafting a Successful Mentoring Framework" Deck comprises 16 essential components of mentorship, along with thought-provoking reflection questions designed to guide you in creating your optimal mentoring model.

**THE GENTLEMEN'S
LEAGUE**
EDUCATE ◊ ENRICH ◊ EMPOWER

Reflection Questions

These reflection questions are designed to assist educators in critically evaluating their school's unique environment and resources, ensuring the selection of mentoring components that align perfectly with their specific goals and capabilities.

1. **Assessing School Culture and Needs:** What are the specific challenges and needs of our students that a mentoring program should address? How does our school's culture influence the type of mentoring that would be most effective?
2. **Resource Availability:** What resources (such as time, space, personnel, and funding) are available at our school to support different mentoring components? How can we maximize these resources for optimal impact?
3. **Student Engagement and Interest:** Which mentoring components are most likely to engage our students based on their interests, backgrounds, and age groups? How can we tailor these components to be more appealing and relevant to our student body?
4. **Staff and Community Involvement:** How can we involve our school staff and the broader community in the mentoring program? What roles could they play, and how can their strengths be utilized in various components of mentoring?
5. **Monitoring and Evaluation:** How will we measure the success and impact of each mentoring component? What metrics or feedback mechanisms can we put in place to continually assess and improve the program?
6. **Sustainability and Adaptability:** How sustainable are the different mentoring components in the long term? Are there ways to adapt these components to evolving needs and circumstances within our school community?

Goal Setting



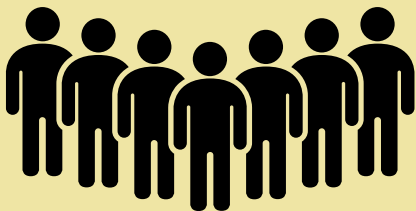
The Gentlemen's League empowers boys of color to set and achieve personal and academic goals, fostering a mindset of excellence and a clear path to success.

Access to Post-Secondary Opportunities



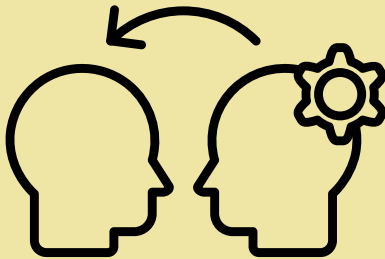
We provide critical guidance and resources to open doors to higher education and career paths, ensuring our boys are prepared for life beyond high school.

Group Mentoring



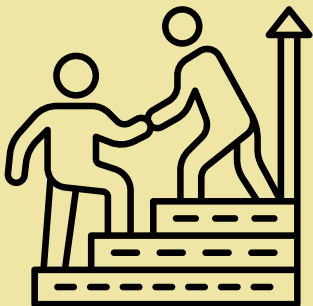
The Gentlemen's League offers group mentoring with a 1:8 mentor-to-mentee ratio, ensuring personalized attention while fostering a community of shared learning and support. This approach cultivates a sense of fellowship and collective growth among the boys.

Peer Mentoring



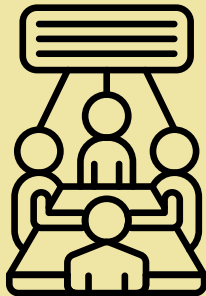
This component facilitates mentorship among peers, where boys learn from and support each other, enhancing camaraderie and empathy.

One on One Mentoring



Individualized mentoring sessions focus on the specific needs and aspirations of each boy, offering personalized guidance and support.

Workshops



Interactive workshops cover a range of topics, from academic skills to personal development, equipping boys with knowledge and tools for success.

Field Trips



Through educational and cultural excursions, we expand the horizons of our boys, exposing them to new experiences and learning opportunities.

Service Learning



Engaging in community service projects instills a sense of responsibility and the importance of giving back, reinforcing the values of integrity and community engagement.

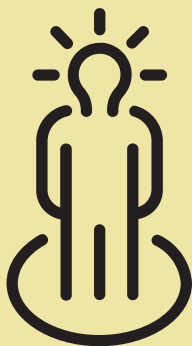
**THE GENTLEMEN'S
LEAGUE**
EDUCATE • ENRICH • EMPOWER

Incentive Programs



This program motivates and rewards academic and personal achievements, encouraging boys to strive for excellence.

Ambassador Program



Selected boys represent The Gentlemen's League, fostering leadership skills and serving as role models within and beyond the community.

**THE GENTLEMEN'S
LEAGUE**
EDUCATE • ENRICH • EMPOWER

Tutoring



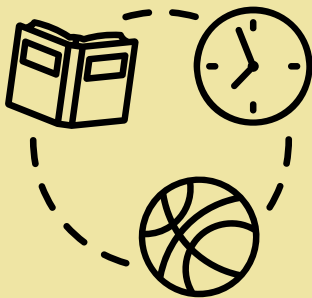
Tailored tutoring sessions address academic challenges, ensuring each boy has the support to thrive academically.

Positive Role Models



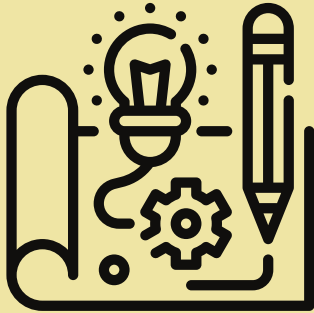
Boys are exposed to inspiring role models who exemplify the values of the Gentlemen's League, showing them pathways to achievement and integrity.

Extracurricular Activities



Schools can create engaging extracurricular options like a Step Team or Basketball Team as part of The Gentlemen's League program. Participation in these team sports and activities not only enhances teamwork and discipline but also instills a sense of joy and pride in collective accomplishment among the boys.

School- Integration



This component seamlessly integrates the mentoring model into the school's blueprint, facilitating daily check-ins and full engagement from all staff, ensuring a cohesive and supportive environment for the students.

Socio-Critical Development



This mentoring component focuses on social-emotional learning intertwined with critically relevant education, guiding boys in understanding and navigating complex social dynamics while fostering critical thinking and self-awareness.

Dress Up Days



Schools participating in The Gentlemen's League can host Dress Up Days, like "Tie Tuesdays" or "Fresh Fridays," to encourage self-respect and pride in appearance among the boys. This initiative not only reinforces the values of professionalism and self-esteem but also fosters a culture of respect and personal dignity within the school environment.