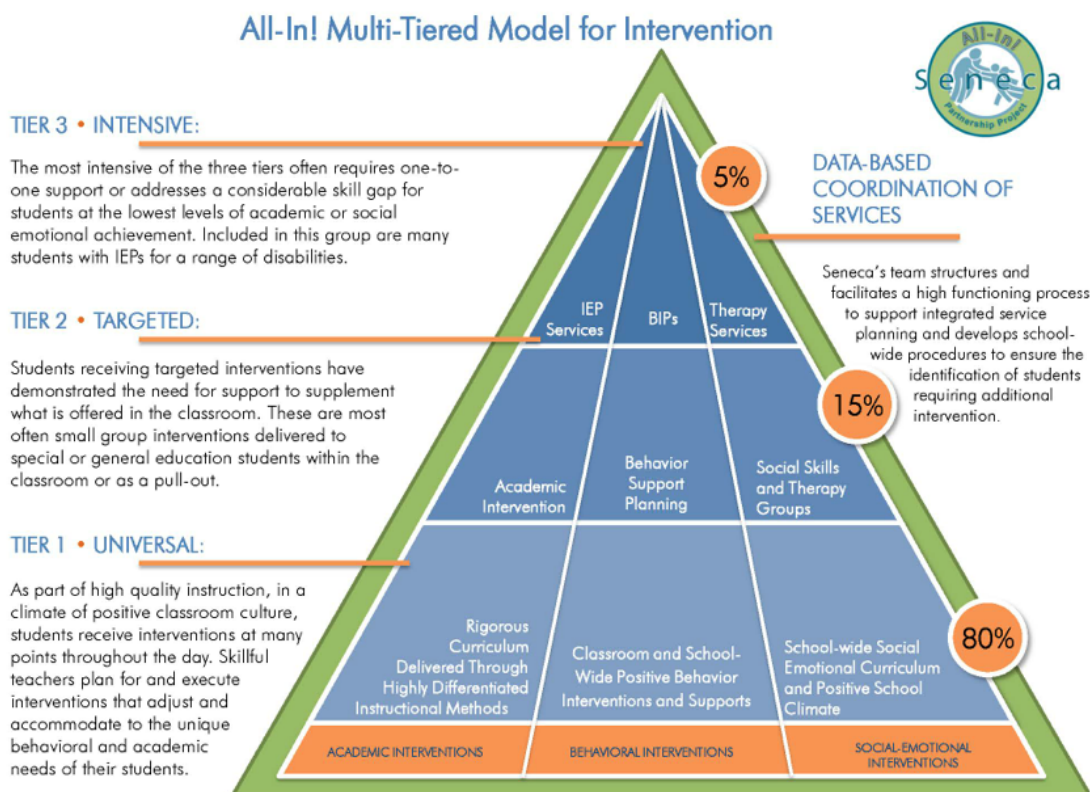


Figure A.TBD Seneca Unconditional Education Model



	ACADEMIC	BEHAVIORAL	SOCIAL-EMOTIONAL
Tier 3	Special Education and Related Services	Behavior Intervention Planning (BIP) and Case Management	Individual and Family Therapy
Tier 2	Academic Intervention	Behavior Support Planning (BSP) and Case Management	Social Skills and Therapy Groups
Tier 1	Rigorous Curriculum delivered through Highly Differentiated Instructional Methods	Classroom and School-wide Positive Behavior Interventions and Supports	School-wide Social Emotional Curriculum and Positive School Climate

RTI is a prevention-oriented framework for providing comprehensive support to students, using assessment data to inform educators' decisions about how best to teach and support the development of their students. This rigorous prevention system provides for the early identification of learning and behavioral challenges and timely intervention for students who are at risk for long-term learning problems. A successful RTI program seeks to minimize the risk for long-term negative learning outcomes by responding quickly and efficiently to documented learning or behavioral problems and ensuring appropriate identification of students with disabilities.